

All contents of this Catalogue, including but not limited to the text, graphics, images and photographs contained herein, and their layout ("Contents") are subject to protection under copyright, industrial property and/ or other rights. The trademarks, including corporate logos and emblems ("Trademark(s)"), are subject to copyright, as well as Trademark rights of either Akrapović d.d., Malo Hudo 8a, 1295 Ivančna Gorica, Slovenia ("Akrapović") or third persons, authorizing Akrapović to use them. Any reproduction, technical or other manipulation, translation, or other use of the Contents and Trademarks is prohibited without an explicit prior written consent of Akrapović. Products, product information and their representations are provided for informative purposes only. Discrepancies between the appearance in the Catalogue and the actual products or product information may exist. Akrapović reserves the right to use additional elements for displaying its products, serving better representation only. Such elements do not represent Akrapović products and are not subject to advertising, offer or sale nor does the present Catalogue represent an offer made by Akrapović. For actual information on specific products, their availability and specifications in each country, please contact Akrapović or local Akrapović authorized dealer. Not all products are necessarily available at every Akrapović dealer. Availability of Akrapović products is subject to Akrapović's discrepancy, mainly based on inventory availability and manufacturing lead time. Akrapović may at any time and at its own discretion change the design, equipment and delivery specifications, without any prior notice. All Akrapović products must be used in accordance with the respective user's guide, with consideration of all safety instructions and precautions only. Akrapović does not assume any responsibility for printing errors or misrepresentations in the present Catalogue and may change any of the information contained herein at any time.

EC Type Approval

Akrapović exhaust systems that meet EC type approval are designated in this catalog with the  icon.

ECE Type Approval

Akrapović exhaust systems that meet ECE type approval are designated in this catalog with the  icon.

ABE type approval

Akrapović products that meet ABE type approval are designated in this catalog with the  icon.

*Otto particulate filter (DPF)/ gasoline particulate filter (GPF)

Akrapović d.d. / Malo Hudo 8a, 1295 Ivančna Gorica, Slovenia / www.akrapovic.com

 /akrapovic  @akrapovic

Design: Akrapović Kreativna d.o.o. / Photos: Akrapović, Alex Štokelj, Benjamin Česen, Blaž Zupančič, Uroš Podlogar

Product code: 801919



ENTERING A NEW DIMENSION WITH AKRAPOVIČ

High-performance exhaust systems for BMW cars



ABOUT AKRAPOVIČ

Akrapovič exhaust systems are renowned for increasing performance, their unmistakable sound, state-of-the-art designs, significant weight reductions, quality workmanship, and durability. This ethos has been in Akrapovič's DNA since the beginning, and the brand has grown to international prominence, standing proudly at the top of the performance exhaust manufacturer's tree.

Through the use of innovative technologies, including the development of titanium alloys, which has led to unmatched high-quality components produced and cast in in-house foundry, Akrapovič has pushed performance levels to outstanding heights and created a unique soundtrack for its exhaust systems.

In addition to this, it has broken barriers in the design world. The impressive honours and numerous awards it has won for its ground-breaking exhausts, including the Red Dot product design awards, are a true recognition of everything Akrapovič has accomplished.





RACE PROVEN

OFFICIAL PARTNER: BMW M MOTORSPORT

Akrapovič and BMW M Motorsport became partners in the 2012 Deutsche Tourenwagen Masters (DTM) championship, the year BMW returned to the series. This has been a fruitful partnership with great success from the start, with Bruno Spengler winning the first DTM title for the team in its inaugural season. This was followed by two more in 2014 and 2016, won by Akrapovič brand ambassador Marco Wittmann, who became the youngest-ever two-time DTM champion when he powered his Akrapovič-equipped BMW M4 DTM to the 2016 title.

Akrapovič provides the latest technological knowhow in high-performance exhaust systems and lightweight technology to give BMW the best advantage on the track. In recent years Akrapovič has extended its official partnership with BMW M Motorsport to the iconic 24-hour race at Germany's famous Nürburgring circuit and the GT World Challenge Europe, where BMW competes with BMW M6 GT3 cars, and to the IMSA WTSC championship, where BMW M8 GTE cars are racing for success, fully equipped with Akrapovič exhaust systems. Working together with BMW M Motorsport's renowned racing department, Akrapovič creates unique exhaust systems that are developed to perfectly extract the power of the BMW M8 GTE, BMW M6 GT3, and completely new BMW M4 GT3, which will be racing from 2022.

There is no better proving ground for a high-performance exhaust system than the most demanding racetracks around the world.



"Akrapovič is a world-renowned and extremely professional company that gets everyone's heart racing. The products are unrivalled both for street use and in motorsports! The increased performance, weight savings, and of course the sound are just incredible. Since 2014 I've been the first Akrapovič brand ambassador, and I'm very proud to be able to promote and present a brand like this. I'm looking forward to staying with the company for many years to come – and to the many successes, victories, and winning championships ahead!"

Marco Wittmann,
2014 & 2016 DTM Drivers' Champion
BMW Works driver





AKRAPOVIČ EXHAUST SYSTEMS FOR BMW CARS



BMW M3 (G80) / M4 (G82) WITH OPF/GPF

Slip-On Line (Titanium)S-BM/T/21H ECE

+ 10.9 HP / 6000 rpm, - 7.8 kg, (- 32.9 %)

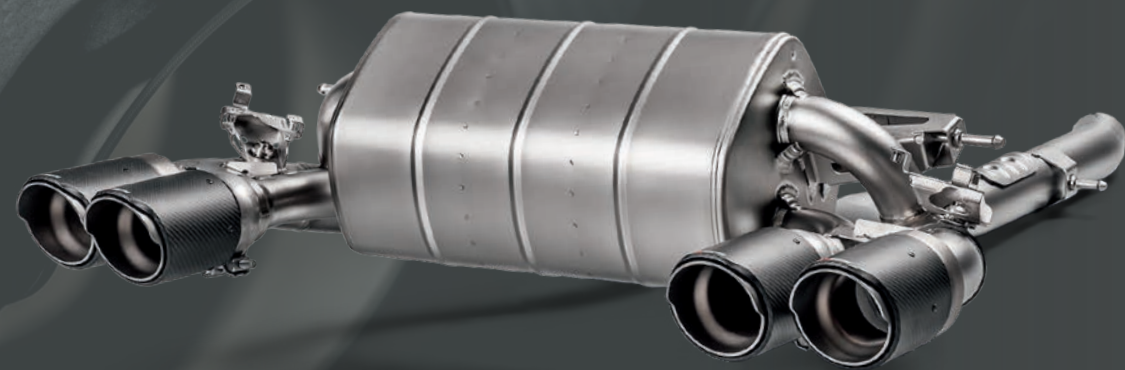
Tail Pipe Set (Carbon) TP-CT/69

Tail Pipe Set (Carbon) TP-CT/68

The system fits on cars with or without OPF/GPF*

ECE type approval is valid only for cars with OPF/GPF





BMW M2 CS (F87N) WITH OPF/GPF

Slip-On Line (Titanium) S-BM/T/26H [ECE]

+ 4.9 HP / 5100 rpm, - 10.2 kg (- 47.9 %)

The system fits on cars with or without OPF/GPF*

ECE type approval is valid only for cars with OPF/GPF



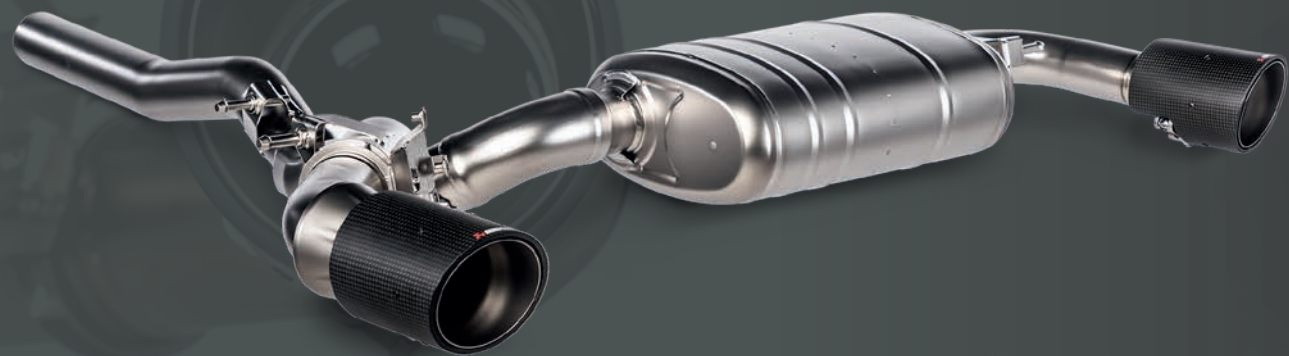
BMW M2 COMPETITION (F87N) WITH OPF/GPF

Slip-On Line (Titanium) S-BM/T/3H [ECE]

+ 4.9 HP / 5100 rpm, - 10.2 kg (- 47.9 %)

The system fits on cars with or without OPF/GPF*

ECE type approval is valid only for cars with OPF/GPF



BMW M135i (F40) / X2 M35i (F39) WITH OPF/GPF

Slip-On Line (Titanium) S-BM/T/15H ECE

+ 4.5 HP / 5350 rpm, - 9.4 kg (- 55.6%)

The system fits on cars with or without OPF/GPF*

ECE type approval is valid only for cars with OPF/GPF



BMW Z4 (G29) WITH OPF/GPF

Slip-On Line (Titanium) S-BM/T/9H ECE

+ 3.0 HP / 2400 rpm, - 6.1 kg (- 36.3 %)

The system fits on cars with or without OPF/GPF*

ECE type approval is valid only for cars with OPF/GPF

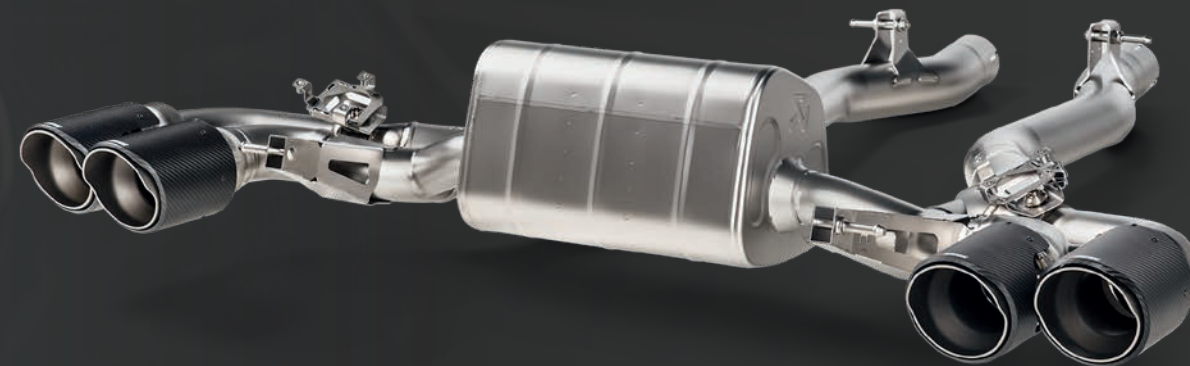




BMW M8 / M8 COMPETITION (F91, F92) WITH OPF/GPF

Slip-On Line (Titanium) S-BM/T/22H ECE

+ 13.3 HP / 5100 rpm, - 4.8 kg (- 27.8 %)

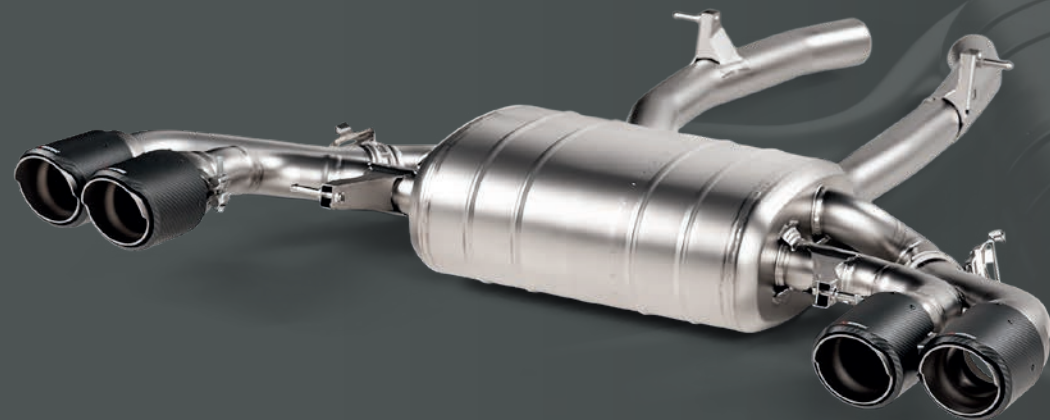


BMW M8 / M8 COMPETITION GRAN COUPÉ (F93) WITH OPF/GPF

Slip-On Line (Titanium) S-BM/T/24H ECE

+ 13.3 HP / 5100 rpm, - 4.6 kg (- 26.9 %)





**BMW X3 M / X3 M COMPETITION (F97)
X4 M / X4 M COMPETITION (F98) WITH OPF/GPF**

Slip-On Line (Titanium) S-BM/T/10H 

+ 7.3 HP / 6550 rpm, - 9.5 kg (- 41.1 %)

BMW X3 M: Tail pipe set (Carbon) TP-CT/59

BMW X4 M: Tail pipe set (Carbon) TP-CT/60



**BMW X5 M / X5 M COMPETITION (F95)
X6 M / X6 M COMPETITION (F96) WITH OPF/GPF**

Slip-On Line (Titanium) S-BM/T/16H 

+ 12.1 HP / 2400 rpm, - 8.4 kg (- 40.7%)

The system fits on cars with or without OPF/GPF*

ECE type approval is valid only for cars with OPF/GPF





BMW M4 (F82, F83) WITH OPF/GPF

Slip-On Line (Titanium) S-BM/T/4H ECE

+ 3.4 HP / 5450 rpm, - 9.0 kg (- 43.7 %)



BMW M4 (F82, F83) / M3 (F80)

Slip-On Line (Titanium) M-BM/T/8H ECE

+ 7.3 HP / 4400 rpm, - 3.0 kg (- 15.0 %)

Tail pipe set (Carbon) TP-CT/26





BMW M5 / M5 COMPETITION (F90) WITH OPF/GPF

Slip-On Line (Titanium) S-BM/T/7H ECE

+ 7.2 HP / 2500 rpm, - 4.3 kg (- 26.1 %)

Tail pipe set (Carbon) TP-CT/47/RS



BMW M5 / M5 COMPETITION (F90)

Evolution Line (Titanium) S-BM/T/2H ECE

+ 11.3 HP / 5700 rpm, - 9.4 kg (- 32.6 %)

Tail pipe set (Carbon) TP-CT/47/RS





BMW M340i (G20, G21) WITH OPF/GPF

Slip-On Line (Titanium) S-BM/T/17H ECE

+ 4.6 HP / 2650 rpm, - 4.4 kg (- 24.6 %)



BMW M440i (G22, G23) WITH OPF/GPF

Slip-On Line (Titanium) S-BM/T/18H ECE

+ 4.6 HP / 2650 rpm, - 4.4 kg (- 24.6 %)





340i (F30, F31) / 440i (F32, F33, F36) WITH OPF/GPF

Slip-On Line (Titanium) S-BM/T/6H

+ 9.0 HP / 6150 rpm, - 4.4 kg (- 43.2 %)



340i (F30, F31) / 440i (F32, F33)

Evolution Line (SS) MTP-BM/SS/2H

+ 4.0 HP / 6400 rpm, - 0.8 kg (- 3.8 %)

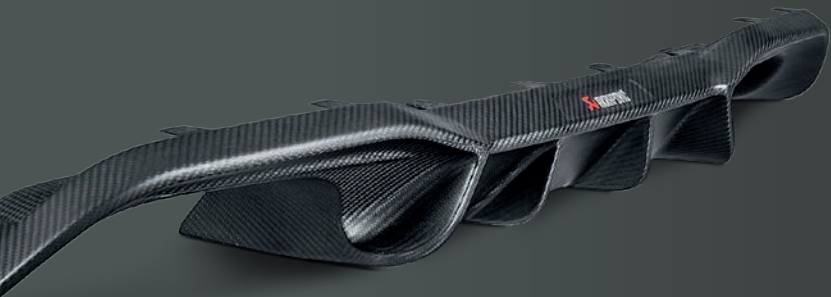
Evolution Link pipe set (SS) E-BM/SS/2





OPTIONAL CARBON-FIBRE PARTS FOR BMW CARS





BMW M2 Competition (F87N), BMW M2 CS (F87N)

Rear Carbon Fiber Diffuser - Matte DI-BM/CA/3/M ABE

Rear Carbon Fiber Diffuser - High Gloss DI-BM/CA/3/G ABE

Carbon Fiber Mirror Cap Set - Matte WM-BM/CA/2/M

Carbon Fiber Mirror Cap Set - High Gloss WM-BM/CA/2/G



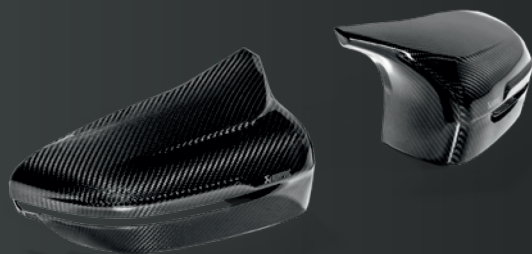
BMW M5 / M5 Competition (F90)

Rear Carbon Fiber Diffuser - Matte DI-BM/CA/5/M/RS ABE

Rear Carbon Fiber Diffuser - High Gloss DI-BM/CA/5/G/RS ABE

Carbon Fiber Mirror Cap Set - Matte WM-BM/CA/3/M

Carbon Fiber Mirror Cap Set - High Gloss WM-BM/CA/3/G



BMW M4 (F82, F83) / M3 (F80)

Rear Carbon Fiber Diffuser - Matte DI-BM/CA/1 ABE

Rear Carbon Fiber Diffuser - High Gloss DI-BM/CA/4/G ABE

Carbon Fiber Mirror Cap Set - Matte WM-BM/CA/2/M

Carbon Fiber Mirror Cap Set - High Gloss WM-BM/CA/2/G




BMW M3 (G80) / M4 (G82)


Rear Carbon Fiber Diffuser - High Gloss DI-BM/CA/9/G ABE





BMW M8 / M8 COMPETITION (F91, F92, F93)

Rear Carbon Fiber Diffuser - High Gloss DI-BM/CA/7/G 

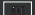
Rear Carbon Fiber Diffuser - Matte DI-BM/CA/7/M 


Carbon Fiber Mirror Cap Set - Matte WM-BM/CA/3/M

Carbon Fiber Mirror Cap Set - High Gloss WM-BM/CA/3/G



X6 M / X6 M Competition (F96), X5 M / X5 M Competition (F95)

Rear Carbon Fiber Diffuser - Matte DI-BM/CA/8/M 

Rear Carbon Fiber Diffuser - High Gloss DI-BM/CA/8/G 



BMW X4 M / X4 M Competition (F98)

Rear Carbon Fiber Diffuser - High Gloss DI-BM/CA/6 